



WIRE ANNOTATION LEGEND:						
0462-201-16141 3 (1021) P7001:2 (BK-18) CBL1025						
PIN TERMINAL (WIRE NO.), DESTINATION:TERMINAL (WIRE COLOR-GAUGE) CABLE NO. -TWISTED PAIR IF APPLICABLE						
NOTE: CONTACT ENGINEERING REGARDING ANY QUESTIONS, CLARIFICATIONS, OR REQUESTED DEVIATIONS						
CREATED DRAWING	BDELAAT	12-12-2022	BDELAAT	12-12-2022		A
REVISION DESCRIPTION	REVISED BY	DATE	REVIEWED BY	DATE	ECO	REV

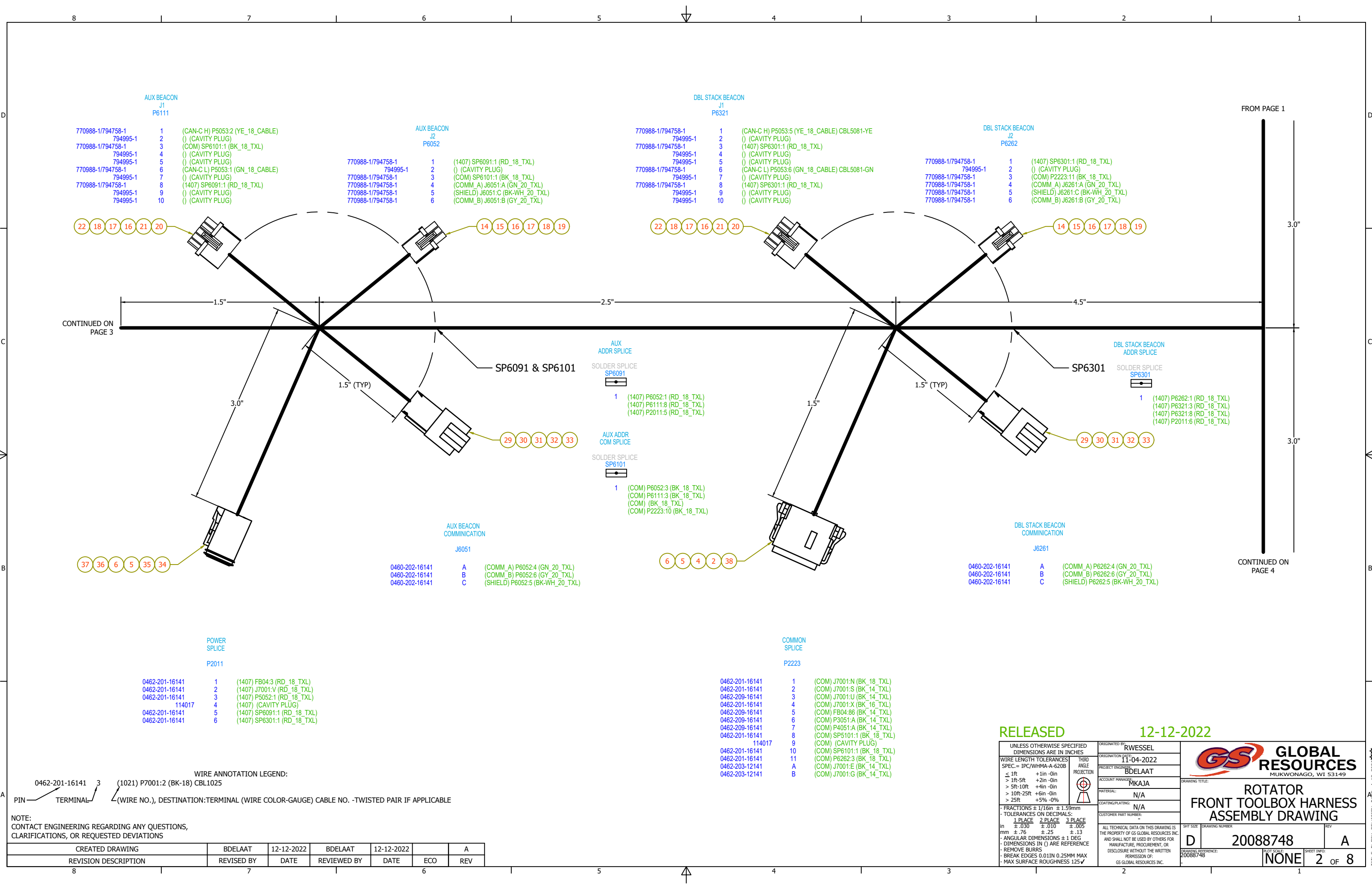
GENERAL HARNESS CONSTRUCTION:

- LABEL WIRES EVERY 4" USING HOT STAMP OR INKJET MARKING WITH WIRE NUMBER AS INDICATED
- TEST PER GS TEST PROCEDURE SPECIFIED IN THE AUDIT CHECKLIST
- HARNESS TO FOLLOW GENERAL PRACTICES OF IPC/WHMA-A-620B
- ALL WIRE IS TYPE TXL UNLESS OTHERWISE SPECIFIED
- APPLY SECONDARY LOCKS & SEALS WHERE APPLICABLE
- CONNECTOR VIEWS ARE WIRE INSERTION SIDE UNLESS OTHERWISE NOTED

- SUPPLIER TO APPLY LABELS TO ALL CONNECTORS DESIGNATED WITH J****, P****, OR OTHER CONNECTOR TAG AND INCLUDE THE NAME (EX. "P5201 LEFT JOYSTICK")
- IF WIRE TIES ARE REQUIRED, APPLY APPROXIMATELY 2" BEFORE TERMINATING CONNECTOR
- ALL "CANH-x" AND "CANL-x" WIRES SHALL BE TWISTED PAIR, 0.67 TO 0.91 TWISTS PER INCH (REFERENCE SAE J1939-15).
- SPLICES MUST BE SOLDERED OR ULTRASONIC WELDED. OFFSET SPLICES TO AVOID THICKNESS BUILD-UP.

UNLESS OTHERWISE SPECIFIED DIMENSIONS ARE IN INCHES			ORIGINATED BY: RWESSEL		 GLOBAL RESOURCES MUKWONAGO, WI 53149			
WIRE LENGTH TOLERANCES SPEC. = IPC/WHMA-A-620B			ORIGIN DATE: 11-04-2022					
THIRD ANGLE PROJECTION			PROJECT ENGINEER: BDELAAT		DRAWING TITLE: ROTATOR FRONT TOOLBOX HARNESS ASSEMBLY DRAWING			
			ACCOUNT MANAGER: MKAJA					
			MATERIAL: N/A					
			COATING/PLATING: N/A					
			CUSTOMER PART NUMBER: -					
			- FRACTIONS ± 1/16in ± 1.59mm					
- TOLERANCES ON DECIMALS:			ALL TECHNICAL DATA ON THIS DRAWING IS THE PROPERTY OF GS GLOBAL RESOURCES INC. AND SHALL NOT BE USED BY OTHERS FOR MANUFACTURE, PROCUREMENT, OR DISCLOSURE WITHOUT THE WRITTEN PERMISSION OF: GS GLOBAL RESOURCES INC.				SHT SIZE: D DRAWING NUMBER: 20088748 REV: A	
1 PLACE 2 PLACE 3 PLACE								
in ± .030 ± .010 ± .005								
mm ± .76 ± .25 ± .13								
- ANGULAR DIMENSIONS ± 1 DEG								
- DIMENSIONS IN () ARE REFERENCE								
- REMOVE BURRS								
- BREAK EDGES 0.011IN 0.25MM MAX								
- MAX SURFACE ROUGHNESS 125✓								
DRAWING REFERENCE: 20088748		PLOT SCALE: NONE		SHEET INFO: 1 OF 8				

TITLE BLOCK REVISION DATE: 4-18-2020

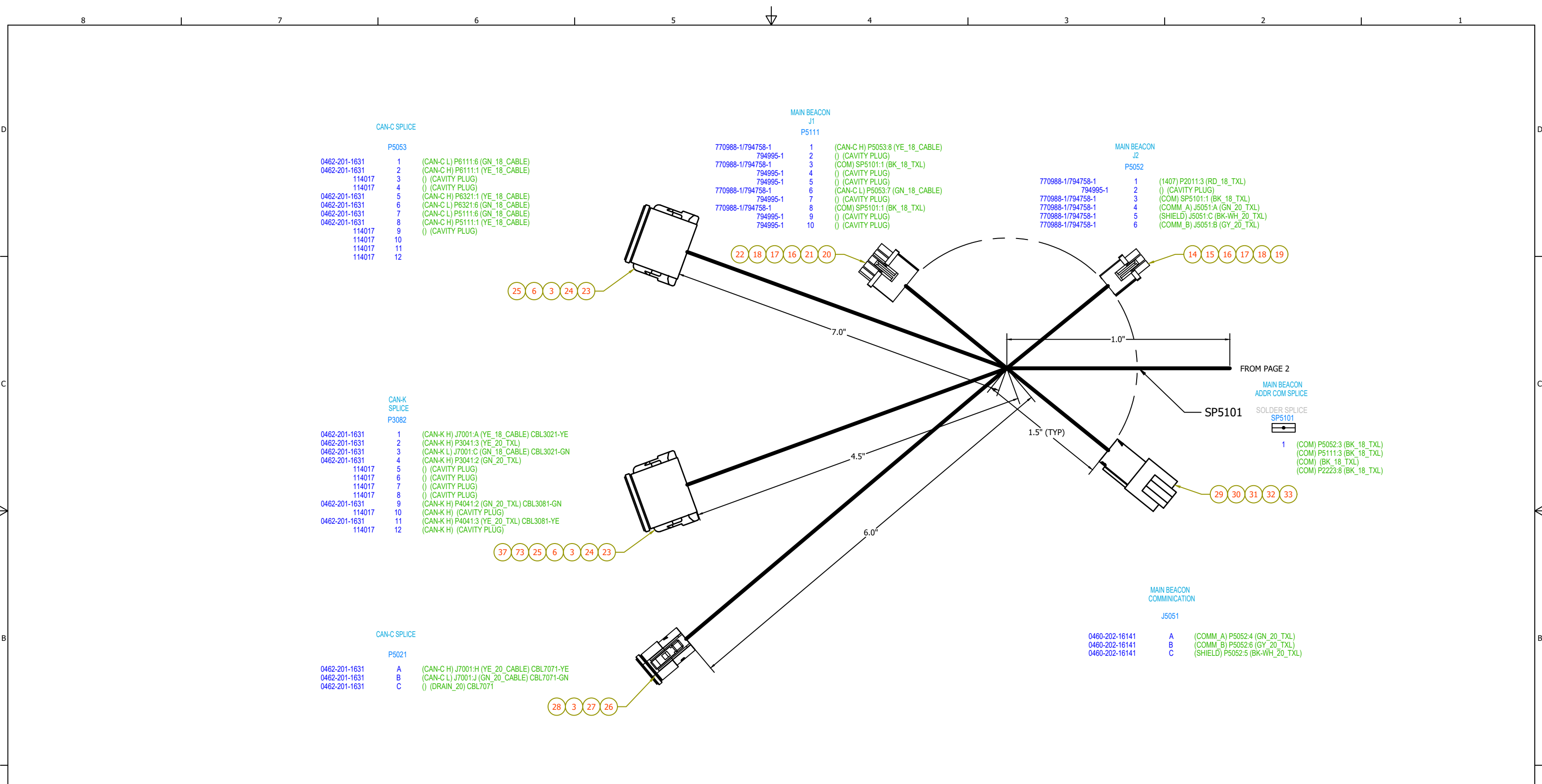


WIRE ANNOTATION LEGEND:						
0462-201-16141 3 (1021) P7001:2 (BK-18) CBL1025						
PIN TERMINAL (WIRE NO.), DESTINATION:TERMINAL (WIRE COLOR-GAUGE) CABLE NO. -TWISTED PAIR IF APPLICABLE						
NOTE: CONTACT ENGINEERING REGARDING ANY QUESTIONS, CLARIFICATIONS, OR REQUESTED DEVIATIONS						
CREATED DRAWING	BDELAAT	12-12-2022	BDELAAT	12-12-2022		A
REVISION DESCRIPTION	REVISED BY	DATE	REVIEWED BY	DATE	ECO	REV

RELEASED12-12-2022

UNLESS OTHERWISE SPECIFIED DIMENSIONS ARE IN INCHES	ORIGINATED BY: RWESSEL
WIRE LENGTH TOLERANCES SPEC. = IPC/WHMA-A-620B	ORIGINATION DATE: 11-04-2022
≤ 1ft +1in -0in	PROJECT ENGINEER: BDELAAT
> 1ft-5ft +2in -0in	ACCOUNT MANAGER: MKAJA
> 5ft-10ft +4in -0in	MATERIAL: N/A
> 10ft-25ft +6in -0in	COATING/PLATING: N/A
> 25ft +5% -0%	CUSTOMER PART NUMBER: -
FRACTIONS ± 1/16in ± 1.59mm	ALL TECHNICAL DATA ON THIS DRAWING IS THE PROPERTY OF GS GLOBAL RESOURCES INC. AND SHALL NOT BE USED BY OTHERS FOR MANUFACTURE, PROCUREMENT, OR DISCLOSURE WITHOUT THE WRITTEN PERMISSION OF: GS GLOBAL RESOURCES INC.
TOLERANCES ON DECIMALS:	
1 PLACE ± .030	2 PLACE ± .010
3 PLACE ± .005	
in ± .76	mm ± .25
ANGULAR DIMENSIONS ± 1 DEG	
DIMENSIONS IN () ARE REFERENCE	
REMOVE BURRS	
BREAK EDGES 0.011IN 0.25MM MAX	
MAX SURFACE ROUGHNESS 125√	

DRAWING TITLE: ROTATOR FRONT TOOLBOX HARNESS ASSEMBLY DRAWING	DRAWING REFERENCE: 20088748	REV: A
SHEET SIZE: 8.5x11	DRAWING NUMBER: 20088748	REV: A
TITLE BLOCK REVISION DATE: 4-18-2020	PLAT SCALE: NONE	SHEET INFO: 2 OF 8



WIRE ANNOTATION LEGEND:

0462-201-16141 3 (1021) P7001:2 (BK-18) CBL1025

PIN ——— TERMINAL ——— (WIRE NO.), DESTINATION:TERMINAL (WIRE COLOR-GAUGE) CABLE NO. -TWISTED PAIR IF APPLICABLE

NOTE:
CONTACT ENGINEERING REGARDING ANY QUESTIONS,
CLARIFICATIONS, OR REQUESTED DEVIATIONS

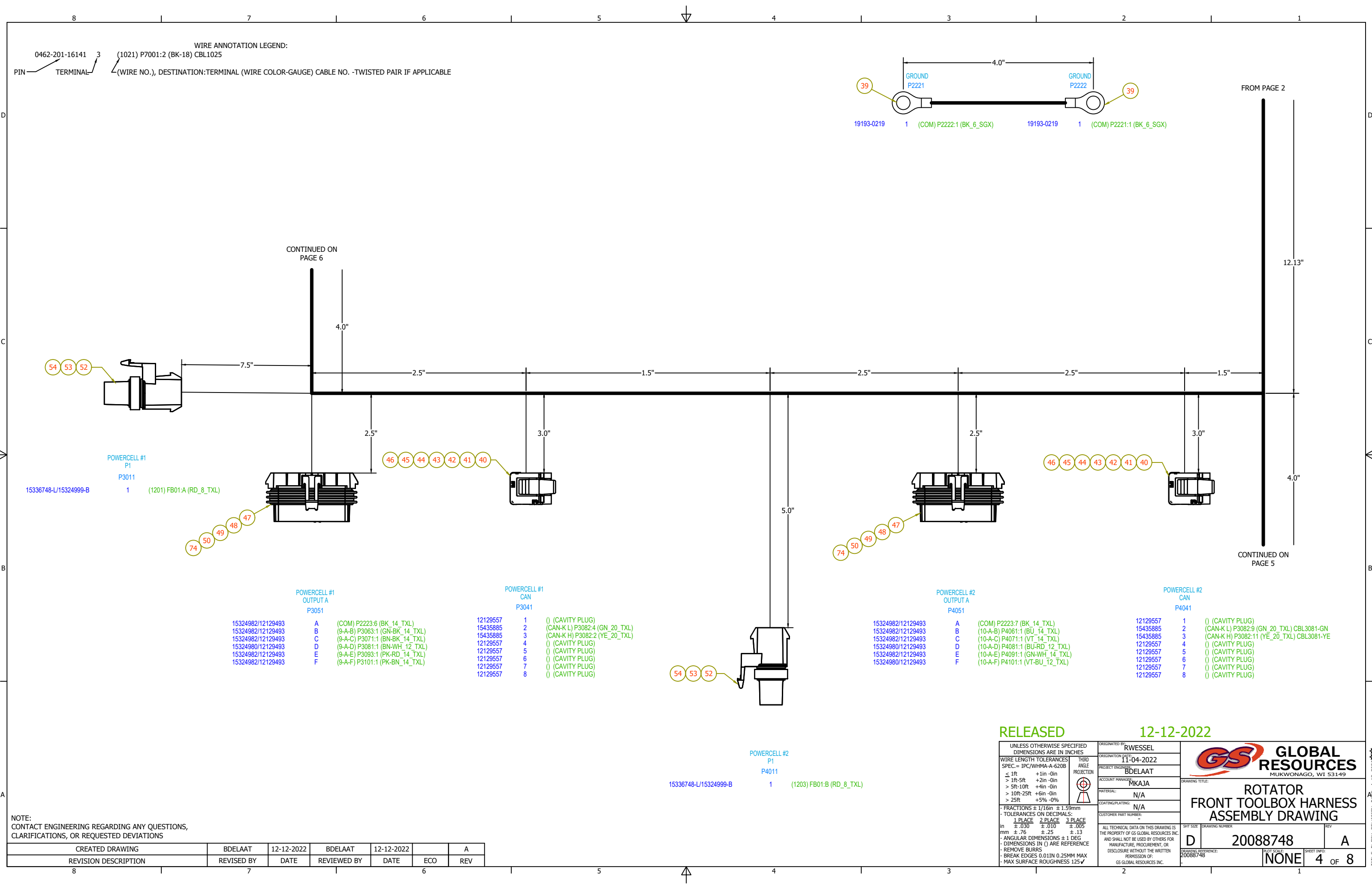
CREATED DRAWING	BDELAAT	12-12-2022	BDELAAT	12-12-2022		A
REVISION DESCRIPTION	REVISED BY	DATE	REVIEWED BY	DATE	ECO	REV

RELEASED12-12-2022

<div>UNLESS OTHERWISE SPECIFIED DIMENSIONS ARE IN INCHES</div> <div>WIRE LENGTH TOLERANCES SPEC. = IPC/WHMA-A-620B</div> <table><tr><td>≤ 1ft</td><td>+1in -0in</td></tr><tr><td>> 1ft-5ft</td><td>+2in -0in</td></tr><tr><td>> 5ft-10ft</td><td>+4in -0in</td></tr><tr><td>> 10ft-25ft</td><td>+6in -0in</td></tr><tr><td>> 25ft</td><td>+5% -0%</td></tr></table> <div>THIRD ANGLE PROJECTION</div>	≤ 1ft	+1in -0in	> 1ft-5ft	+2in -0in	> 5ft-10ft	+4in -0in	> 10ft-25ft	+6in -0in	> 25ft	+5% -0%	ORIGINATED BY: RWESSEL	<div>GLOBAL RESOURCES</div> <div>MUKWONAGO, WI 53149</div>
	≤ 1ft	+1in -0in										
	> 1ft-5ft	+2in -0in										
	> 5ft-10ft	+4in -0in										
	> 10ft-25ft	+6in -0in										
> 25ft	+5% -0%											
	ORIGINATION DATE: 11-04-2022											
	PROJECT ENGINEER: BDELAAT											
	ACCOUNT MANAGER: MKAJA											
	MATERIAL: N/A											
	COATING/PLATING: N/A											
	CUSTOMER PART NUMBER: -											
ALL TECHNICAL DATA ON THIS DRAWING IS THE PROPERTY OF GS GLOBAL RESOURCES INC. AND SHALL NOT BE USED BY OTHERS FOR MANUFACTURE, PROCUREMENT, OR DISCLOSURE WITHOUT THE WRITTEN PERMISSION OF: GS GLOBAL RESOURCES INC.												

DRAWING REFERENCE: 20088748	DRAWING NUMBER: 20088748	SHEET INFO: 3 OF 8
-----------------------------	--------------------------	--------------------

TITLE BLOCK REVISION DATE: 4-18-2020



NOTE:
CONTACT ENGINEERING REGARDING ANY QUESTIONS,
CLARIFICATIONS, OR REQUESTED DEVIATIONS

CREATED DRAWING	BDELAAT	12-12-2022	BDELAAT	12-12-2022		A
REVISION DESCRIPTION	REVISED BY	DATE	REVIEWED BY	DATE	ECO	REV

RELEASED

12-12-2022

UNLESS OTHERWISE SPECIFIED
DIMENSIONS ARE IN INCHES

WIRE LENGTH TOLERANCES
SPEC. = IPC/WHMA-A-620B

THIRD ANGLE
PROJECTION

FRACTIONS ± 1/16in ± 1.59mm

TOLERANCES ON DECIMALS:

in ± .030 ± .010 ± .005

mm ± .76 ± .25 ± .13

ANGULAR DIMENSIONS ± 1 DEG

DIMENSIONS IN () ARE REFERENCE

REMOVE BURRS

BREAK EDGES 0.011IN 0.25MM MAX

MAX SURFACE ROUGHNESS 125✓

ORIGINATED BY: RWESSEL

ORIGINATION DATE: 11-04-2022

PROJECT ENGINEER: BDELAAT

ACCOUNT MANAGER: MKAJA

MATERIAL: N/A

COATING/PLATING: N/A

CUSTOMER PART NUMBER: -

ALL TECHNICAL DATA ON THIS DRAWING IS
THE PROPERTY OF GS GLOBAL RESOURCES INC.
AND SHALL NOT BE USED BY OTHERS FOR:
MANUFACTURE, PROCUREMENT, OR
DISCLOSURE WITHOUT THE WRITTEN
PERMISSION OF:
GS GLOBAL RESOURCES INC.

GS

GLOBAL
RESOURCES

MUKWONAGO, WI 53149

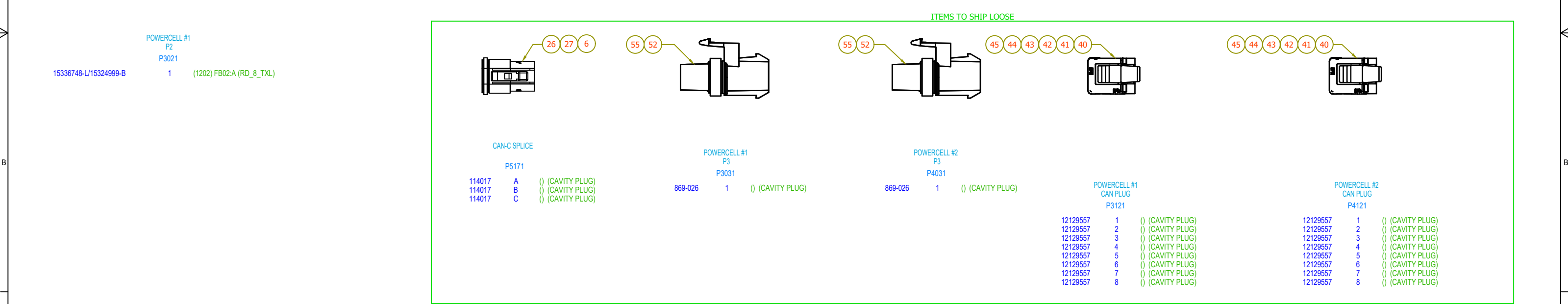
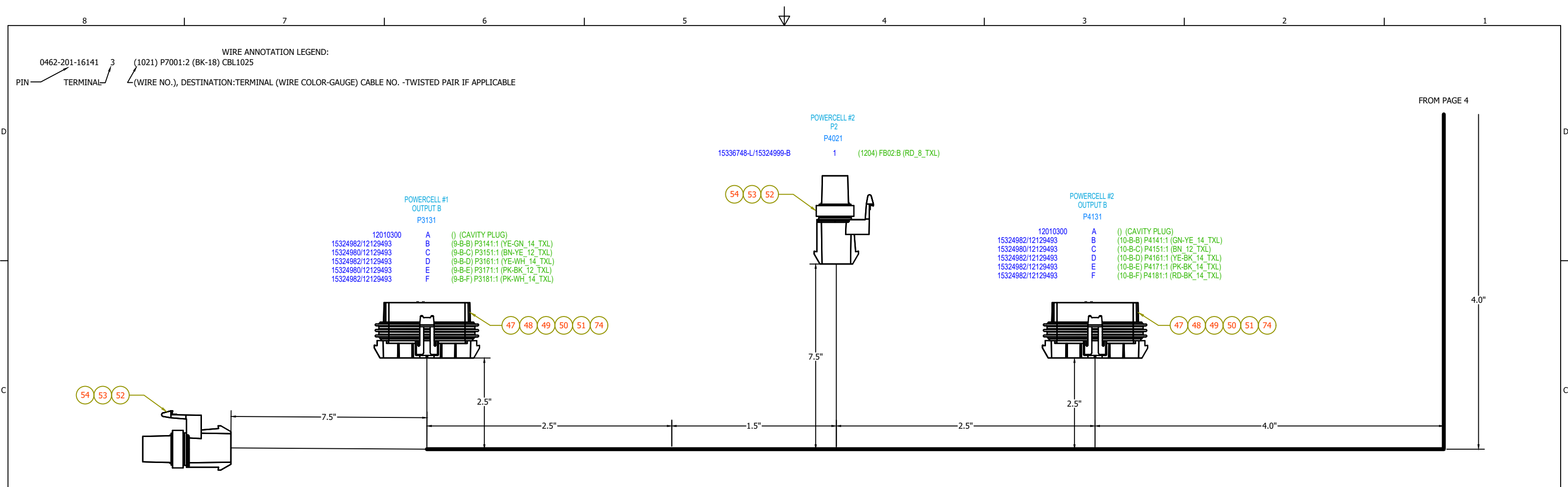
DRAWING TITLE:
**ROTATOR
FRONT TOOLBOX HARNESS
ASSEMBLY DRAWING**

SHT SIZE: D
DRAWING NUMBER:
20088748
DRAWING REFERENCE:
20088748

PLOT SCALE:
NONE

SHEET INFO:
4 OF **8**
REV: **A**


TITLE BLOCK REVISION DATE: 4-18-2020



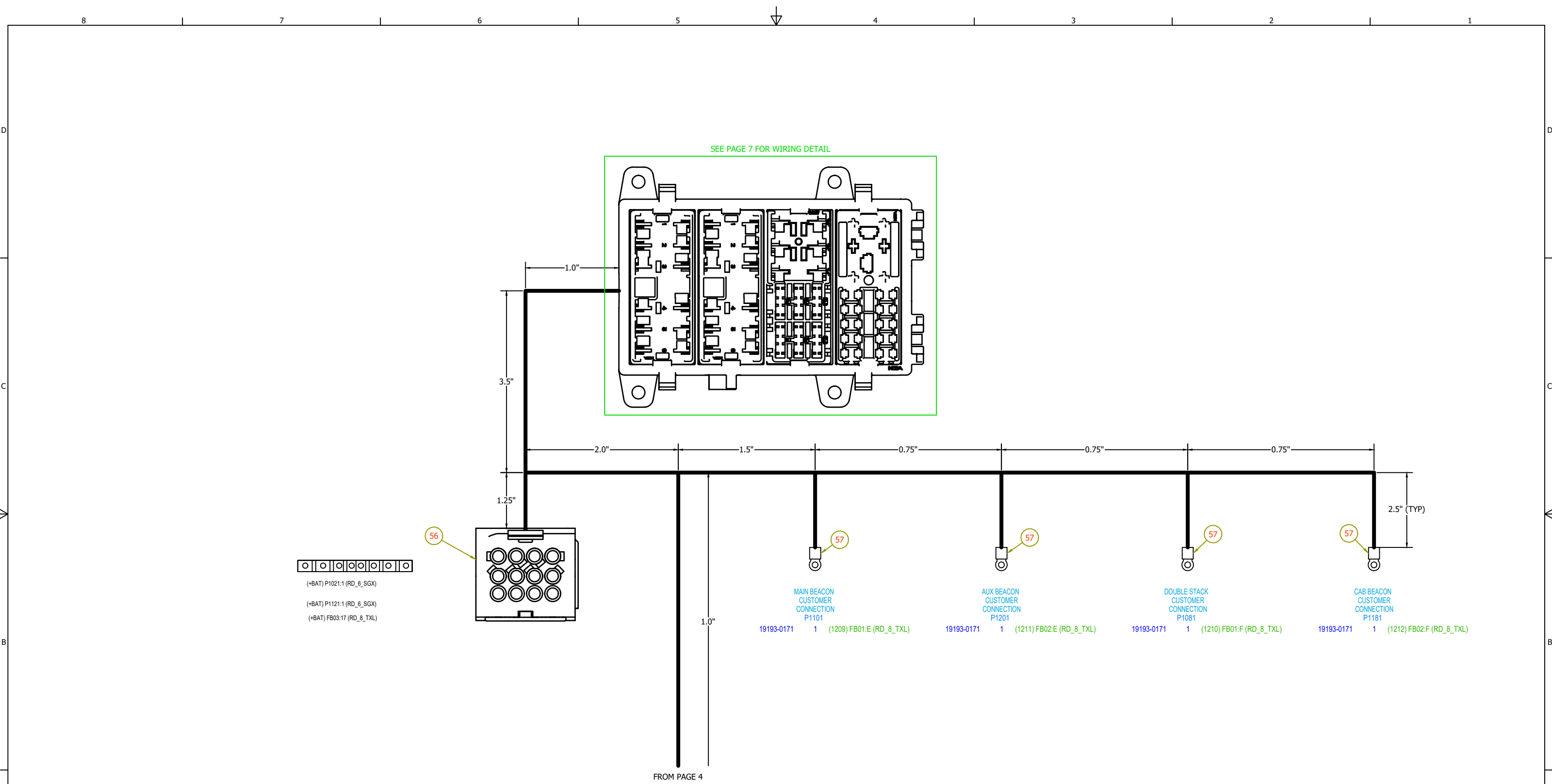
NOTE:
CONTACT ENGINEERING REGARDING ANY QUESTIONS,
CLARIFICATIONS, OR REQUESTED DEVIATIONS

CREATED DRAWING	BDELAAT	12-12-2022	BDELAAT	12-12-2022		A
REVISION DESCRIPTION	REVISED BY	DATE	REVIEWED BY	DATE	ECO	REV

RELEASED 12-12-2022

UNLESS OTHERWISE SPECIFIED DIMENSIONS ARE IN INCHES	ORIGINATED BY: RWESSEL	 GLOBAL RESOURCES MUKWONAGO, WI 53149	
WIRE LENGTH TOLERANCES SPEC. = IPC/WHMA-A-620B	ORIGINATION DATE: 11-04-2022		
THIRD ANGLE PROJECTION	PROJECT ENGINEER: BDELAAT		
≤ 1ft +1in -0in > 1ft-5ft +2in -0in > 5ft-10ft +4in -0in > 10ft-25ft +6in -0in > 25ft +5% -0%	ACCOUNT MANAGER: MKAJA		
	MATERIAL: N/A		
- FRACTIONS ± 1/16in ± 1.59mm - TOLERANCES ON DECIMALS: 1 PLACE ± .030 2 PLACE ± .010 3 PLACE ± .005 in ± .76 mm ± .25 - ANGULAR DIMENSIONS ± 1 DEG - DIMENSIONS IN () ARE REFERENCE - REMOVE BURRS - BREAK EDGES 0.01IN 0.25MM MAX - MAX SURFACE ROUGHNESS 125✓	COATING/PLATING: N/A	CUSTOMER PART NUMBER: -	
ALL TECHNICAL DATA ON THIS DRAWING IS THE PROPERTY OF GS GLOBAL RESOURCES INC. AND SHALL NOT BE USED BY OTHERS FOR: MANUFACTURE, PROCUREMENT, OR DISCLOSURE WITHOUT THE WRITTEN PERMISSION OF: GS GLOBAL RESOURCES INC.		DRAWING TITLE: ROTATOR FRONT TOOLBOX HARNESS ASSEMBLY DRAWING	
SHT SIZE: D		DRAWING NUMBER: 20088748	REV: A
DRAWING REFERENCE: 20088748		PLOT SCALE: NONE	SHEET INFO: 5 OF 8

TITLE BLOCK REVISION DATE: 4-18-2020



WIRE ANNOTATION LEGEND:

0462-201-16141 3 (1021) P7001:2 (BK-18) CBL1025

PIN TERMINAL (WIRE NO.), DESTINATION:TERMINAL (WIRE COLOR-GAUGE) CABLE NO. -TWISTED PAIR IF APPLICABLE

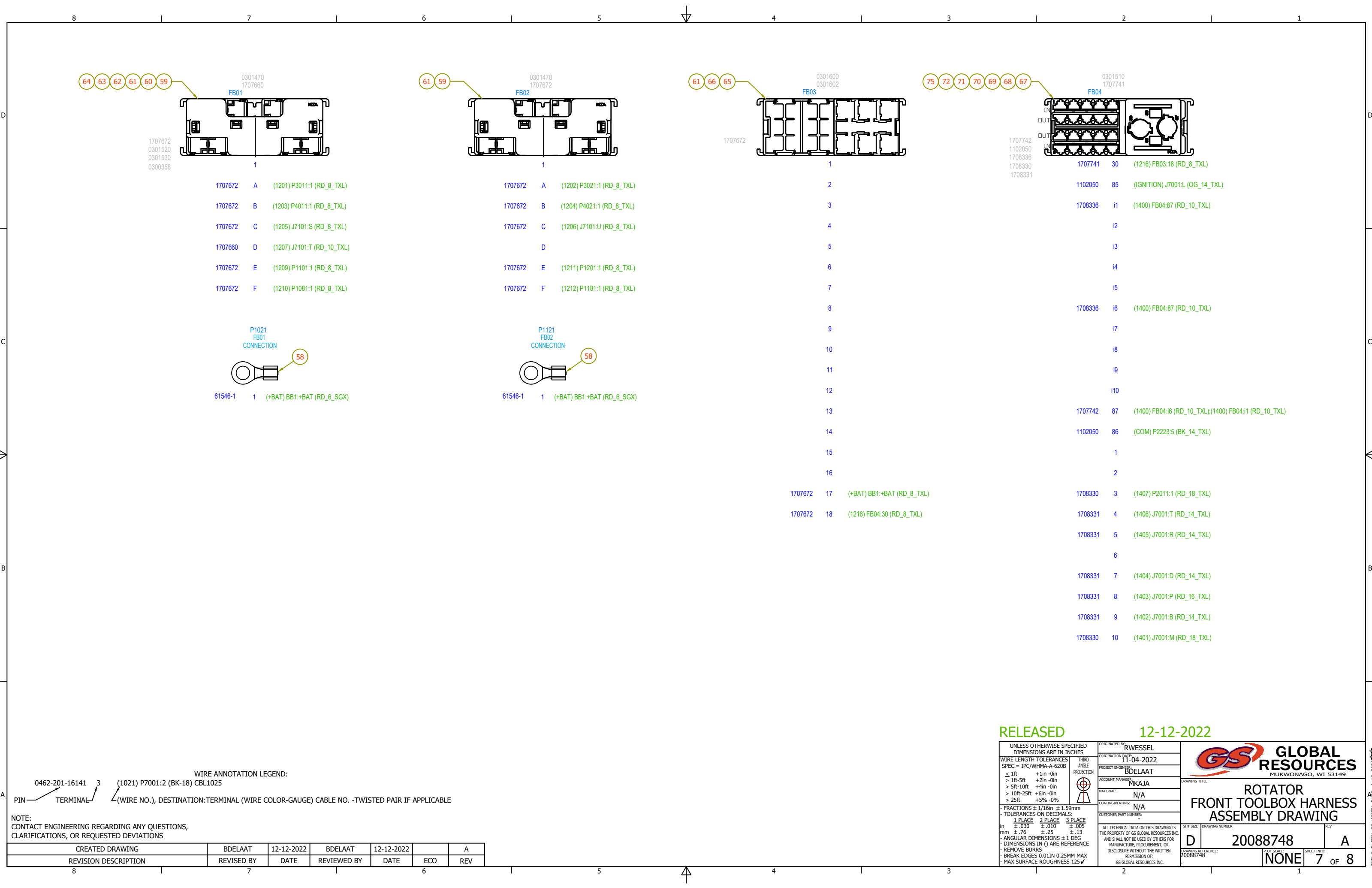
NOTE:
CONTACT ENGINEERING REGARDING ANY QUESTIONS,
CLARIFICATIONS, OR REQUESTED DEVIATIONS

CREATED DRAWING	BDELAAT	12-12-2022	BDELAAT	12-12-2022		A
REVISION DESCRIPTION	REVISED BY	DATE	REVIEWED BY	DATE	ECO	REV

RELEASED12-12-2022

<div>UNLESS OTHERWISE SPECIFIED DIMENSIONS ARE IN INCHES</div> <div>WIRE LENGTH TOLERANCES SPEC.= IPC/WHMA-A-620B</div> <div>THIRD ANGLE PROJECTION</div> <div>FRACTIONS ± 1/16in ± 1.59mm</div> <div>TOLERANCES ON DECIMALS:</div> <div>1 PLACE 2 PLACE 3 PLACE</div> <div>in ± .030 ± .010 ± .005</div> <div>mm ± .76 ± .25 ± .13</div> <div>ANGULAR DIMENSIONS ± 1 DEG</div> <div>DIMENSIONS IN () ARE REFERENCE</div> <div>REMOVE BURRS</div> <div>BREAK EDGES 0.011IN 0.25MM MAX</div> <div>MAX SURFACE ROUGHNESS 125✓</div>	ORIGINATED BY: RWESSEL	<div>GLOBAL RESOURCES</div> <div>MUKWONAGO, WI 53149</div> <div>DRAWING TITLE:</div> <div>ROTATOR FRONT TOOLBOX HARNESS ASSEMBLY DRAWING</div> <div>SHT SIZE: D</div> <div>DRAWING NUMBER: 20088748</div> <div>REV: A</div>
	ORIGINATION DATE: 11-04-2022	
	PROJECT ENGINEER: BDELAAT	
	ACCOUNT MANAGER: MKAJA	
	MATERIAL: N/A	
COATING/PLATING: N/A		
CUSTOMER PART NUMBER: -		
ALL TECHNICAL DATA ON THIS DRAWING IS THE PROPERTY OF GS GLOBAL RESOURCES INC. AND SHALL NOT BE USED BY OTHERS FOR MANUFACTURE, PROCUREMENT, OR DISCLOSURE WITHOUT THE WRITTEN PERMISSION OF: GS GLOBAL RESOURCES INC.		

TITLE BLOCK REVISION DATE: 4-18-2020




0462-201-16141 3 (1021) P7001:2 (BK-18) CBL1025

PIN TERMINAL (WIRE NO.), DESTINATION:TERMINAL (WIRE COLOR-GAUGE) CABLE NO. -TWISTED PAIR IF APPLICABLE

NOTE:
CONTACT ENGINEERING REGARDING ANY QUESTIONS,
CLARIFICATIONS, OR REQUESTED DEVIATIONS

CREATED DRAWING	BDELAAT	12-12-2022	BDELAAT	12-12-2022		A
REVISION DESCRIPTION	REVISED BY	DATE	REVIEWED BY	DATE	ECO	REV

RELEASED 12-12-2022

UNLESS OTHERWISE SPECIFIED DIMENSIONS ARE IN INCHES		ORIGINATED BY: RWESSEL		 GLOBAL RESOURCES MUKWONAGO, WI 53149	
WIRE LENGTH TOLERANCES SPEC. = IPC/WHMA-A-620B		ORIGINATION DATE: 11-04-2022			
THIRD ANGLE PROJECTION		PROJECT ENGINEER: BDELAAT			
ACCOUNT MANAGER: MKAJA		MATERIAL: N/A			
COATING/PLATING: N/A		CUSTOMER PART NUMBER: -		DRAWING TITLE: ROTATOR FRONT TOOLBOX HARNESS ASSEMBLY DRAWING	
- FRACTIONS ± 1/16in ± 1.59mm - TOLERANCES ON DECIMALS: 1 PLACE 2 PLACE 3 PLACE in ± .030 ± .010 ± .005 mm ± .76 ± .25 ± .13 - ANGULAR DIMENSIONS ± 1 DEG - DIMENSIONS IN () ARE REFERENCE - REMOVE BURRS - BREAK EDGES 0.011in 0.25MM MAX - MAX SURFACE ROUGHNESS 125✓		ALL TECHNICAL DATA ON THIS DRAWING IS THE PROPERTY OF GS GLOBAL RESOURCES INC. AND SHALL NOT BE USED BY OTHERS FOR MANUFACTURE, PROCUREMENT, OR DISCLOSURE WITHOUT THE WRITTEN PERMISSION OF: GS GLOBAL RESOURCES INC.			
		SHT SIZE: D		DRAWING NUMBER: 20088748	
		PLOT SCALE: NONE		SHEET INFO: 7 OF 8	

D

C

B

A

NOTE:
CONTACT ENGINEERING REGARDING ANY QUESTIONS,
CLARIFICATIONS, OR REQUESTED DEVIATIONS

CREATED DRAWING	BDELAAT	12-12-2022	BDELAAT	12-12-2022		A
REVISION DESCRIPTION	REVISED BY	DATE	REVIEWED BY	DATE	ECO	REV


ITEMS	CATALOG	MFG	DESCRIPTION	QTY
1	HDP24-24-21SE-L017	DEUTSCH	HDP20 21 POS RECEPTACLE E-SEAL REVERSE GENDER WITH ADAPTER RING	1
2	0462-203-12141	DEUTSCH	COMMON CONTACT SOCKET	11
3	0462-201-1631	DEUTSCH	COMMON CONTACT SOCKET	21
4	0462-209-16141	DEUTSCH	COMMON CONTACT SOCKET	9
5	0462-201-16141	DEUTSCH	COMMON CONTACT SOCKET	16
6	114017	DEUTSCH	SEALING PLUG	19
7	2428-004-2405	DEUTSCH	HDP20 SIZE 24 BACKSHELL 90 DEG	2
8	2411-001-2405	DEUTSCH	HD PANEL NUT, PLASTIC, SIZE 24	2
9	2414-001-2486	DEUTSCH	HDP LOCKWASHER, WAVE, SIZE 24	2
10	16-04477	DEUTSCH	HD GASKET, SIZE 24	2
11	HDP24-24-9SN-L017	DEUTSCH	HDP20 9 POS RECEPTACLE N-SEAL REVERSE GENDER WITH ADAPTER RING	1
12	114019-ZZ	DEUTSCH	SEALING PLUG	1
13	0462-203-08141	DEUTSCH	COMMON CONTACT SOCKET	2
14	794895-1	AMP	MINI-UNIVERSAL MATE-N-LOK SEALED PLUG 6-POS DUAL ROW	3
15	794772-6	AMP	MINI-UNIVERSAL MATE-N-LOK SEALED INTERFACE SEAL 6-POS	3
16	794995-1	AMP	MINI-UNIVERSAL MATE-N-LOK CAVITY PLUG	69
17	794758-1	AMP	MINI-UNIVERSAL MATE-N-LOK WIRE SEAL 1.02-2.11mm	27
18	770988-1	AMP	MINI-UNIVERSAL MATE-N-LOK TERMINAL SOCKET 22-18 AWG PRE-TIN CRIMP	27
19	794940-1	AMP	MINI-UNIVERSAL MATE-N-LOK SEALED RECEPTACLE 6-POS DUAL ROW	3
20	794781-1	AMP	MINI-UNIVERSAL MATE-N-LOK SEALED PLUG 10-POS DUAL ROW	3
21	1-794772-0	AMP	MINI-UNIVERSAL MATE-N-LOK SEALED INTERFACE SEAL 10-POS	3
22	794942-1	AMP	MINI-UNIVERSAL MATE-N-LOK SEALED RECEPTACLE 10-POS DUAL ROW	3
23	DT06-12SA-C015	DEUTSCH	DT SERIES	2
24	W12S	DEUTSCH	WEDGELOCK	2
25	1028-043-1205	DEUTSCH	DT06-12S* BACKSHELL	2
26	DT06-3S-C015	DEUTSCH	DEUTSCH DT PLUG 3 POS REDUCED SEAL	2
27	W3S-1939	DEUTSCH	WEDGELOCK	2
28	1011-259-0305	DEUTSCH	DT06-3S BACKSHELL	1
29	DT04-3P-C015	DEUTSCH	DT RECEPTACLE	3
30	W3P	DEUTSCH	WEDGELOCK	3
31	0460-202-16141	DEUTSCH	COMMON CONTACT PIN	9
32	1011-233-0305	DEUTSCH	DT04-3P BACKSHELL	3
33	DT06-3S-C017	DEUTSCH	DETUSCH DT PLUG 3 POS SOLID REAR GROMMET	3
34	DT06-6S-C015	DEUTSCH	DT PLUG	1
35	W6S	DEUTSCH	WEDGELOCK	1
36	DT04-6P-P021	DEUTSCH	DEUTSCH RECPT DT 6 POS BUS	1
37	1027-003-1200	DEUTSCH	MOUNTING CLIP	2
38	AT1612-13SB	AMPHENDL	PLUG 11 x SIZE 16, 2 x SIZE 12 DT SOCKETS w/ WEDGELOCK	1
39	19193-0219	MOLEX	VERSAKRIMP RING TERMINAL,6AWG, 5/16 STUD, 0.328" OD MAX	2
40	15357036	DELPHI	MICRO-PACK 100W SERIES CONNECTOR 8-POS SEALED FEMALE	4
41	15318138	DELPHI	MICRO-PACK 100W SERIES RETAINER 8-POS	4
42	15318139	DELPHI	MICRO-PACK 100W SERIES CONNECTOR SEAL	4
43	15318140	DELPHI	MICRO-PACK 100W SERIES STRAIN RELIEF YELLOW	4
44	15318141	DELPHI	MICRO-PACK 100W SERIES CPA RED AXIAL	4
45	12129557	DELPHI	MICRO-PACK 100W SERIES CAVITY PLUG BLUE	28
46	15435885	DELPHI	MIRCO-PACK 100W SERIES TERMINAL UNSEALED FEMALE 0.35-0.50mm2 GOLD	4
47	12110295	DELPHI	METRI-PACK 280 SERIES 6-POS FEMALE PLUG GREY	4
48	12059195	DELPHI	METRI-PACK 280 6-POS TPA	4
49	15324982	DELPHI	METRI-PACK 280 SERIES CABLE SEAL, GREEN	16
50	12129493	DELPHI	METRI-PACK 280 SERIES TERMINAL SEALED FEMALE 2.00-3.00mm2 TIN	22
51	12010300	DELPHI	METRI-PACK 280 SERIES CAVITY PLUG, GREEN	2
52	12129387	DELPHI	METRI-PACK 800 SERIES CONNECTOR 1-POS	6
53	15336748-L	DELPHI	METRI-PACK 800 SERIES TERMINAL SEALED FEMALE 5mm2 SILVER	4
54	15324999-B	DELPHI	METRI-PACK 800 SERIES CABLE SEAL, BLUE	4
55	869-026	INFINITY BOX	METRI-PACK 800 SERIES CAVITY PLUG, CLEAR	2
56	UD-400212CU	ERIFLEX	POWER DISTRIBUTION BLOCK COPPER	1
57	19193-0171	MOLEX	VERSAKRIMP RING TERMINAL,8AWG, 5/16 STUD, 0.328" OD MAX	4
58	61546-1	TE	RING TERMINAL 10-6AWG 5/16IN STUD UNINSULATED	2
59	0301470	MTA	MTA MAXI FUSE MODULE 6-POSITION BUSSED	2

ITEMS	CATALOG	MFG	DESCRIPTION	QTY
60	1707660	MTA	MTA F800 TERMINAL 4.0-6.0MM2	1
61	1707672	MTA	MTA F800 TERMINAL 8.0-10.0MM2	12
62	0301520	MTA	MTA TYPE B MODULAR PDM FRAME 4-POSITION	1
63	0301530	MTA	MTA TYPE B MODULAR PDM COVER 4-POSITION	1
64	0300358	MTA	MTA FUSE EXTRACTOR	1
65	0301600	MTA	MTA MAXI FUSE - ATM FUSE MODULE 9 POSITION	1
66	0301602	MTA	MTA SECONDARY LOCK FOR MAXIVAL	1
67	0301510	MTA	MTA ISD POWER RELAY - ATM FUSE MODULE 11-POSITION	1
68	1707741	MTA	MTA F950 POWER TERMINAL 6.0-8.0MM2	1
69	1102050	MTA	MTA SPT F630 TERMINAL 2.5-4.0MM2	2
70	1708336	MTA	MTA F280 BUS BAR TERMINAL 2.5-4.0MM2	2
71	1708330	MTA	MTA F280 TERMINAL 0.35 - 0.75MM2	2
72	1708331	MTA	MTA F280 TERMINAL 1.0 - 2.0MM2	5
73	DT04-12PA-P075	DEUTSCH	DEUTSCH RECPT DT 12 POS BUS 4,4,4	1
74	15324980	DELPHI	METRI-PACK 280 SERIES CABLE SEAL, GREY	6
75	1707742	MTA	MTA F950 POWER TERMINAL 10.0-16.0MM2	1

ITEMS 40-55 CAN BE PURCHASED IN PREPACKAGED KITS FROM INFINITYBOX, LLC.
2 KITS ARE REQUIRED PER ASSEMBLY. (ITEM 51 SOLD SEPERATELY)

POWERCELL CONNECTOR KIT - INFINITYBOX P/N 858-998-GS01				
ITEMS	CATALOG	MFG	DESCRIPTION	QTY
40-45		DELPHI	MICRO-PACK 100W SERIES CONNECTOR ASSEMBLY	2
46	15435885	DELPHI	MIRCO-PACK 100W SERIES TERMINAL UNSEALED FEMALE 0.35-0.50mm2 GOLD	4
47	12110295	DELPHI	METRI-PACK 280 SERIES 6-POS FEMALE PLUG GREY	2
48	12059195	DELPHI	METRI-PACK 280 6-POS TPA	2
49	15324982	DELPHI	METRI-PACK 280 SERIES CABLE SEAL, GREEN	12
50	12129493	DELPHI	METRI-PACK 280 SERIES TERMINAL SEALED FEMALE 2.00-3.00mm2 TIN	12
52	12129387	DELPHI	METRI-PACK 800 SERIES CONNECTOR 1-POS	3
53	15336748-L	DELPHI	METRI-PACK 800 SERIES TERMINAL SEALED FEMALE 5mm2 SILVER	3
54	15324999-B	DELPHI	METRI-PACK 800 SERIES CABLE SEAL, BLUE	3
55	869-026	INFINITY BOX	METRI-PACK 800 SERIES CAVITY PLUG, CLEAR	1

RELEASED 12-12-2022

<div>UNLESS OTHERWISE SPECIFIED DIMENSIONS ARE IN INCHES</div> <div>WIRE LENGTH TOLERANCES SPEC.= IPC/WHMA-A-620B</div> <div>≤ 1ft +1in -0in > 1ft-5ft +2in -0in > 5ft-10ft +4in -0in > 10ft-25ft +6in -0in > 25ft +5% -0%</div> <div>- FRACTIONS ± 1/16in ± 1.59mm - TOLERANCES ON DECIMALS: 1 PLACE ± .030 2 PLACE ± .010 3 PLACE ± .005 in ± .76 mm ± .25 - ANGULAR DIMENSIONS ± 1 DEG - DIMENSIONS IN () ARE REFERENCE - REMOVE BURRS - BREAK EDGES 0.011IN 0.25MM MAX - MAX SURFACE ROUGHNESS 125✓</div>	ORIGINATED BY: RWESSEL	<div> GLOBAL RESOURCES MUKWONAGO, WI 53149</div> <div>DRAWING TITLE: ROTATOR FRONT TOOLBOX HARNESS ASSEMBLY DRAWING</div> <div>SHT SIZE: D DRAWING NUMBER: 20088748 REV: A</div> <div>DRAWING REFERENCE: 20088748 PLOT SCALE: NONE SHEET INFO: 8 OF 8</div>
	ORIGINATION DATE: 11-04-2022	
	PROJECT ENGINEER: BDELAAT	
	ACCOUNT MANAGER: MKAJA	
	MATERIAL: N/A	
COATING/PLATING: N/A		
CUSTOMER PART NUMBER: -	ALL TECHNICAL DATA ON THIS DRAWING IS THE PROPERTY OF GS GLOBAL RESOURCES INC. AND SHALL NOT BE USED BY OTHERS FOR: MANUFACTURE, PROCUREMENT, OR DISCLOSURE WITHOUT THE WRITTEN PERMISSION OF: GS GLOBAL RESOURCES INC.	